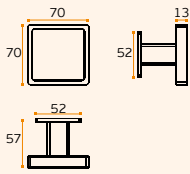


INOX +

**PUXADORES E ACESSÓRIOS /
LEVER HANDLES AND ACCESSORIES /
MANILLAS Y ACCESORIOS.**

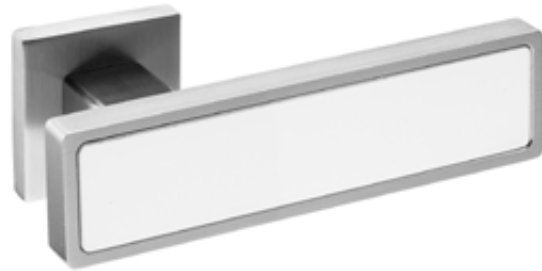


IN.00.407.NS SATIN
Puxador fixo / Fixed knob / Pomo fijo
IN.08.BFPE (standard / Standard)
Design: Miguel Vasconcelos

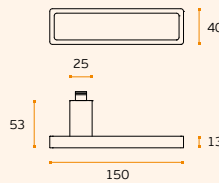


MATERIAL: EN 1.4301 / AISI 304 +
ALUMINIUM + NIQUEL SATIN
ACABAMENTO / FINISH / ACABADO:
STANDARD: SATINADO / SATIN / SATIN
OPTIONAL: PVD TITANIUM COATED
.TB / .TG / .TCO / .TCH

SOLID ■



IN.00.161.W WHITE RAL 9016
Puxador / Lever handle / Manilla
QC08M (Roseta standard / Standard rose)
Design: Miguel Vasconcelos



MATERIAL: EN 1.4301 / AISI 304 +
ALUMINIUM + RAL 9016
ACABAMENTO / FINISH / ACABADO:
STANDARD: SATINADO / SATIN / SATIN
OPTIONAL: PVD TITANIUM COATED
.TB / .TG / .TCO / .TCH

SOLID ■

EN1906 2 6 - 0 0 3 0 8

.P
Mirror
finish

.TB
PVD
Titanium
black

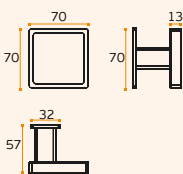
.TG
PVD
Titanium
gold

.TCO
PVD
Titanium
copper

.TCH
PVD
Titanium
chocolate

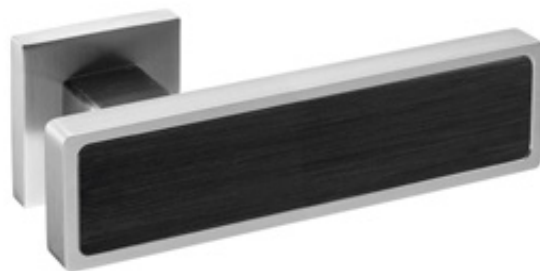


IN.00.408.NS NIQUEL SATIN
Puxador fixo / Fixed knob / Pomo fijo
IN.08.BRP (standard / Standard)
Design: Miguel Vasconcelos

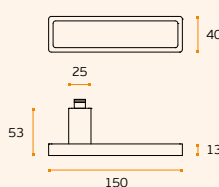


MATERIAL: EN 1.4301 / AISI 304 +
ALUMINIUM + NIQUEL SATIN
ACABAMENTO / FINISH / ACABADO:
STANDARD: SATINADO / SATIN / SATIN
OPTIONAL: PVD TITANIUM COATED
.TB / .TG / .TCO / .TCH

SOLID ■



IN.00.161.BK BLACK
Puxador / Lever handle / Manilla
QC08M (Roseta standard / Standard rose)
Design: Miguel Vasconcelos



MATERIAL: EN 1.4301 / AISI 304 +
ALUMINIUM
ACABAMENTO / FINISH / ACABADO:
STANDARD: SATINADO / SATIN / SATIN
OPTIONAL: PVD TITANIUM COATED
.TB / .TG / .TCO / .TCH

SOLID ■

EN1906 2 6 - 0 0 3 0 8

Key symbol
Pag.064

Key symbol
Pag.290

Key symbol
Pag.200

Key symbol
Pag.226

Key symbol
Pag.236