

ROUND TWO

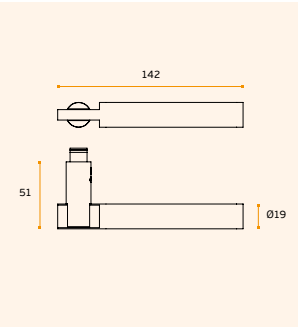
**PUXADORES E ACESSÓRIOS /
LEVER HANDLES AND ACCESSORIES /
MANILLAS Y ACCESORIOS.**



IN.00.260

**Puxador maciço / Solid lever handle / Manilla maciza.
RC08M (Roseta standard / Standard rose)**

- .TB
- .TG
- .TCO
- .TCH



MATERIAL: EN 1.4301 / AISI 304
ACABAMENTO / FINISH / ACABADO:
STANDARD: SATINADO / SATIN / SATIN
OPTIONAL: PVD TITANIUM COATED
.TB / .TG / .TCO / .TCH

SOLID ■

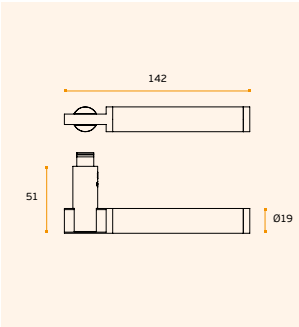
EN1906 3 7 - 0 0 3 0 B



IN.00.261

**Puxador / Lever handle / Manilla.
RC08M (Roseta standard / Standard rose)**

- .TB
- .TG
- .TCO
- .TCH



MATERIAL: EN 1.4301 / AISI 304
ACABAMENTO / FINISH / ACABADO:
STANDARD: SATINADO / SATIN / SATIN
OPTIONAL: PVD TITANIUM COATED
.TB / .TG / .TCO / .TCH

SEMI SOLID ■

EN1906 3 7 - 0 0 3 0 B

.P
Mirror
finish

.TB
PVD
Titanium
black

.TG
PVD
Titanium
gold

.TCO
PVD
Titanium
copper

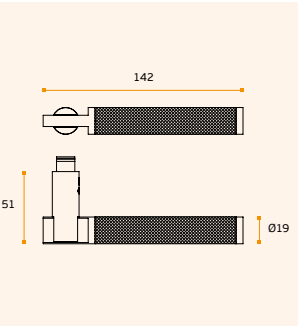
.TCH
PVD
Titanium
chocolate



IN.00.262

**Puxador / Lever handle / Manilla.
RC08M (Roseta standard / Standard rose)**

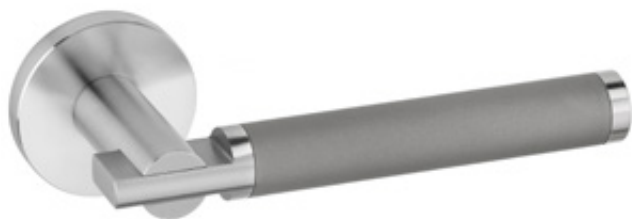
- .TB
- .TG
- .TCO
- .TCH



MATERIAL: EN 1.4301 / AISI 304
ACABAMENTO / FINISH / ACABADO:
STANDARD: SATINADO / SATIN / SATIN
OPTIONAL: PVD TITANIUM COATED
.TB / .TG / .TCO / .TCH

SEMI SOLID ■

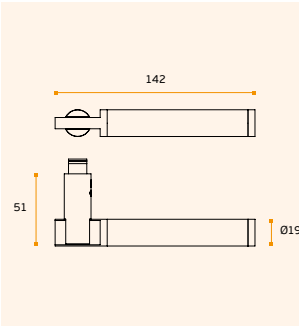
EN1906 3 7 - 0 0 3 0 B



IN.00.263

**Puxador / Lever handle / Manilla.
RC08M (Roseta standard / Standard rose)**

- .TB
- .TG
- .TCO
- .TCH



MATERIAL: EN 1.4301 / AISI 304
ACABAMENTO / FINISH / ACABADO:
STANDARD: SATINADO + JET / SATIN +
JET / SATIN + JET

SEMI SOLID ■

EN1906 3 7 - 0 0 3 0 B

Key
Pag.064

Key
Pag.290

Key
Pag.200

Key
Pag.226

Key
Pag.236